

2019

SNOWMOBILES



THE DEAD OF WINTER. WHEN WE FEEL THE MOST ALIVE.

THRIVE IN THE WIDE WORLD OF ARCTIC CAT



Your tracks. Your time. This is what every snowfall demands. Because living in the Wide World of Arctic Cat® means doing right by winter and keeping your soul fed. We honor this responsibility by bringing you innovation that improves the way you ride and lets you dominate any landscape. No matter where you play, or what you seek, there is an Arctic Cat snowmobile perfectly built for the task.



2019 INNOVATIONS

GROUNDBREAKING INSTANT RESPONSE ELECTRONIC SUSPENSION

Never before has a suspension system worked so hard for you, so you can keep your focus on the ride. Our Interactive Arctic Cat Technology lets you choose from three ride control settings on the fly. No more counting clicks in freezing conditions, and no more stopping. [See page 15 for more details.](#)

iACT
SUSPENSION



ADJUST ON THE FLY

A thumb-operated button on the handlebar controls both ski shocks and the rear track shock, allowing the rider to instantly switch between **soft, medium and firm** settings, optimizing performance for varying conditions and riding styles.

- ▶ **ADJUST ON THE FLY**
- ▶ **PUSH BUTTON CONTROLS**
- ▶ **3 SETTINGS: SOFT, MEDIUM, FIRM**
- ▶ **HIGHLY VISIBLE DUAL SCREENS**
- ▶ **FOX IQS SHOCKS**

ALPHA ONE

REVOLUTIONARY SINGLE-BEAM REAR SUSPENSION

Introducing the Alpha One™, a giant leap forward in backcountry performance. It combines our award-winning Mountain Cat® package with a revolutionary new single-beam rear suspension system that flexes with the terrain and performs incredibly in deep powder. It's also super lightweight, making it easier to handle while upping the ante when side hilling. [See page 11 for more details.](#)



- ▶ **ULTIMATE MANEUVERABILITY**
- ▶ **SUPERIOR FLOTATION**
- ▶ **MINIMAL BODY INPUT**
- ▶ **LIGHTWEIGHT DESIGN**
- ▶ **REDUCED CARRY WEIGHT**



SINGLE-BEAM REAR SUSPENSION

The Alpha One's single beam allows the track to flex and conform to the snow. This delivers a new level of maneuverability, substantially easier side hilling and increased traction in deep snow.

BUILT TO REACH THE TOP OF THE WORLD.

Now more than ever, our mountain machines are at the top of their game, so you can rise above the challengers. Lightweight, maneuverable and powerful, there's no place these machines can't go and nothing they can't do. So when the mountaintop tempts you, hold nothing back. Give in and pursue the peak.



ASCENDER PLATFORM

THE NEW STANDARD FOR ATTACKING THE MOUNTAINS.

MOUNTAIN DRIVE SYSTEM

To get you up and stay up on the snow, the Ascender™ Platform works in harmony with the Mountain Drive System with a flatter approach angle.

VERTICAL STEERING POST

A flat turning radius provides supreme leverage, so you can drive with ease from a seated or standing position.

NARROW FRAME

The lightweight Ascender Platform, now on all Arctic Cat M machines, features running boards that are 1" narrower on each side, plus narrower foot wells. This lets you carve through trees and maneuver your sled with ease.



New upgraded handlebar-mounted controls



MOUNTAIN QUICK-RELEASE BODY PANELS

With 10% narrower body styling, these one-piece body panels radically improve side hilling and venting. The two quick-release tabs provide easy access to the engine compartment for general maintenance.

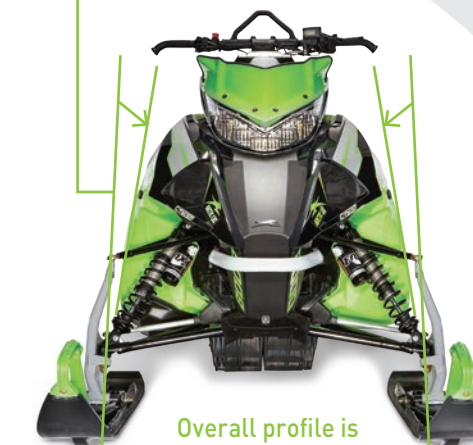


POWER CLAW™ TRACK

The Power Claw's unique lug type and pattern allow it to flex in hardpack conditions.

FLOAT-ACTION REAR SUSPENSION

The skid frame incorporates lightweight aluminum axles and shock bushings. Rail braces and caps boost strength and rigidity in all conditions.



Overall profile is narrower for improved side hill performance



M SERIES

153"
141"



M SE

- 165-class HP 2-stroke C-TEC2™ 8000 engine
- Ascender Platform
- Arctic Cat IFP shocks and coil-over rear shocks
- 2.6" Power Claw track
- 3" mountain-height windshield

141" (6000) 153" (6000)

162"
153"



Two color options

M SNO PRO®

- 165-class HP 2-stroke C-TEC2 8000 engine
- Ascender Platform
- FOX FLOAT® 3 ski shocks and rear track shock with infinite air spring adjustment
- 3" mountain-height windshield
- 2.6" or 3.0" Power Claw track
- Available with electric start

153" (8000) 162" (8000)

162"
153"



M HARD CORE

- 165-class HP 2-stroke C-TEC2 8000 engine
- Reinforced rear suspension rails
- FOX 1.5 ZERO QS3 front and ski shocks and QSL rear track shock
- 3" mountain-height windshield
- 2.6" or 3.0" Power Claw track

153" (8000) 162" (8000)

162"



M KING CAT 9000

- 200-class HP 4-stroke 9000 engine
- FOX FLOAT 3 EVOL™ ski shocks and front arm shock
- FOX FLOAT 3 QSL rear arm shock with two ride positions and a third position climb lockout function
- Improved rear wheel assembly
- Next-gen skid plates and narrow running boards
- 3" Power Claw track for deep powder dominance

162" (9000)

BACKCOUNTRY SUSPENSION REBORN.



A WHOLE NEW BEGINNING FOR DEEP SNOW PERFORMANCE.

Every millimeter of the Alpha One works with you to float through the powder, ascend to breathtaking heights and take every turn with precision. Welcome to a new era of high-altitude adventure.

SINGLE-BEAM REAR SUSPENSION

As revolutionary as the original slide-rail suspension, the Alpha One's suspension system consists of a lightweight and rigid single beam.

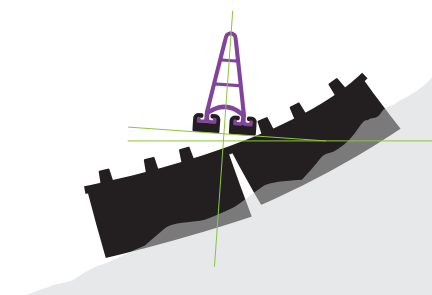
THE EXTRUDED ALUMINUM BEAM

Hollowed box support system with magnesium attachment points resulting in minimal parts and a lighter machine.



SINGLE PIVOT POINT

Allows the track to bend and conform to the snow — whether you're on a side hill or flat surface, or straight up in powder.



NEXT-GEN POWER CLAW TRACK

Designed specifically for the Alpha One, this track features centered windows to align with the beam. And aggressive 3.0" paddles with a 3.5" pitch provide fantastic snow-gripping power with the flexibility to maneuver almost effortlessly.

NEW UPGRADED HANDLEBAR CONTROLS

The controls are smaller and more ergonomic, and they're the only in the industry to feature all controls right there on the handlebar, rather than down on the dash.

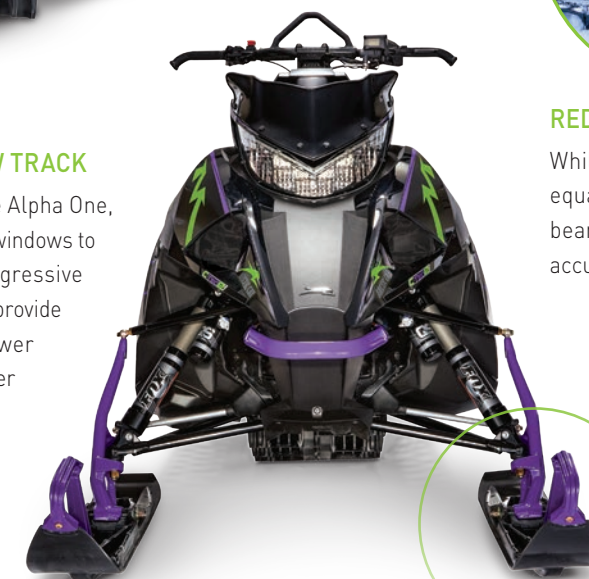


REDUCED CARRY WEIGHT

While other machines can accumulate snow equal to their rear suspension weight, the single beam's simple design virtually eliminates snow accumulation that would otherwise weigh you down.

G2 PROCLIMB-7™ SKIS

All-new skis improve balance and flotation, ease steering effort and give more consistent performance in varying snow conditions. Molded-in traction on the top of the ski adds sure-footed control and usability.



INTRODUCING THE MOUNTAIN CAT
ALPHA ONE



MOUNTAIN CAT

ALPHA ONE

SPRING GUARANTEE
LIMITED AVAILABILITY



MOUNTAIN CAT ALPHA ONE™

- 165-class HP 2-stroke 8000 engine
- NEW single-beam rear suspension
- FOX FLOAT 3 QS3 ski shocks and front arm shock
- FOX FLOAT 3 QSL rear arm shock with two ride positions and a third position climb lockout function
- 3" Power Claw track for deep powder dominance

154" (8000) 165" (8000)



MOUNTAIN CAT 8000

- 165-class HP 2-stroke 8000 engine
- FOX FLOAT 3 QS3 ski shocks and front arm shock
- FOX FLOAT 3 QSL rear arm shock with two ride positions and a third climb lockout position
- 3" Power Claw track for deep powder dominance
- Available with electric start



153" (8000) 162" (8000)

FEEL MORE ALIVE WITH EVERY PRESS OF THE THROTTLE.



This is living. Speeding down the trails, chasing freedom from behind an open throttle. The ZR® lineup was built for this. With a range of suspension calibrations, engine sizes and more, you're sure to find the trail sled that's perfect for you.

PERFORMANCE INNOVATIONS

ARS™ FRONT SUSPENSION WITH SLIDE-ACTION REAR SUSPENSION™
Choose your ZR based on the suspension that best suits your riding style. Or go with the ZR Limited, featuring the groundbreaking iACT™ Suspension that lets you instantly switch between calibrations while riding.



iACT™ SUSPENSION

The ZR Limited comes with the groundbreaking iACT Suspension that lets you instantly switch between soft, medium and firm calibrations with the push of a button. No more stopping to adjust your suspension.



FOX ZERO iQS SHOCKS

This award-winning shock system enables multiple compression settings.



REDESIGNED DIGITAL GAUGE

New highly visible dual LED screens display information transmitted by new handlebar-mounted controls.

FEEL THE DIFFERENCE.

Change as fast as the terrain changes by choosing from **THREE DIFFERENT RIDE CONTROL SETTINGS** with the push of a button.

SOFT

MEDIUM

FIRM

ZR

- Updated handlebar controls
- Soft suspension calibration for comfortable trail riding
- Next-gen body plastic (3000, 7000)
- Engine packages ranging from 65- to 165-class horsepower
- 129" Ripsaw™ or 137" Ripsaw II track for superior handling, cornering, accelerating and braking
- 11" mid-height windshield offers supreme wind protection
- Electric start standard on all models

129" (3000, 6000, 7000, 8000) 137" (6000, 7000, 8000)



ZR SNO PRO®

- Updated handlebar controls
- Firm suspension calibration for aggressive trail riding
- Ceramic-coated muffler on 6000
- FOX 1.5 ZERO RC shocks provide the option to adjust compression and rebound damping
- LED headlight (9000)
- 129" Ripsaw or 137" Ripsaw II track for superior handling, cornering, accelerating and braking
- 5.5" race-height windshield
- Electric start standard on all models

129" (6000, 8000, 9000) 137" (6000, 8000, 9000)



ZR LIMITED ZR LIMITED WITH iACT™

- NEW iACT — Intelligent Arctic Cat Technology Suspension allows you to specifically calibrate your ride experience on the go
- LED headlight, goggle holder and tunnel flares
- 11" mid-height windshield offers supreme wind protection
- Electric start standard on all models

129" (6000, 8000) 137" (6000, 7000, 8000, 9000)



TRAIL PERFORMANCE



TRAIL PERFORMANCE



ZR THUNDERCAT®
ZR THUNDERCAT WITH iACT™

- 200+ class horsepower, 998cc turbo triple 4-stroke engine
- NEW iACT — Intelligent Arctic Cat Technology suspension allows you to specifically calibrate your ride experience on the go
- Non-iACT Thundercat: FOX 1.5 ZERO QS3 ski shocks and rear track shocks for aggressive trail performance
- LED headlight, goggle holder, tunnel flares and hand guards
- With a lower ride height and a shorter 1" lug, the Thundercat is built for speed
- 11" mid-height windshield offers supreme wind protection

137" (9000)



ZR RR
ZR RR 9000 TURBO

- A race-ready snowmobile for a pro-level experience
- SLIDE-ACTION Rear Suspension with FOX 2.0 ZERO QS3R Kashima coated rear shock and FOX 1.5 ZERO QS3 Kashima coated front shock and ski shock
- Lightweight brake disc provides improved performance
- Gold Kashima coating enhances shock performance
- LED headlight

129" (6000, 8000) 137" (6000, 8000, 9000)

YOUTH PERFORMANCE



ZR 120

- Smaller size perfect for younger kids
- Proven 123cc 4-stroke engine keeps them going all day
- Safety flag and tether switch standard
- Cobra™ track for improved traction
- Hand warmers with comfort grips
- In-seat storage
- Halogen headlight



ZR 200

- The perfect size for trail-ready youth
- Strong 192cc 4-stroke engine
- Cobra track and slide-rail suspension provide legitimate long travel capabilities
- Trail-certified with high and low beam headlights, brake lights and heated handlebar grips
- Electric start

  Two color options



FOR THOSE WHO LIVE ON AND OFF THE EDGE.

Take on the trails. Then take off for more thrills. The XF lineup has never met a boundary it couldn't cross. A synthesis of both mountain and trail technology, XF machines are deeply versatile and profoundly capable. Climb a chute. Zoom a trail. Don't ever choose between them again.



HYBRID CHARACTERISTICS

Whether you love the trails or like to venture out farther where there's powder, we've got an XF just for you.

CROSS COUNTRY™ RIP THE TRAIL. OR BLAZE YOUR OWN.

HIGH COUNTRY™ CARVE THE POWDER. OR HIT THE TRAILS.



ARCTIC RACE SUSPENSION™ (ARS) FRONT SHOCKS

Up front, the swaybar-equipped ARS suspension features a 42-43" adjustable stance and ProCross-6 skis for maximum cornering capability.

SLIDE-ACTION REAR SUSPENSION

SLIDE-ACTION Rear Suspension delivers outstanding traction in loose snow while still offering great bite and longevity on hard-packed trails.

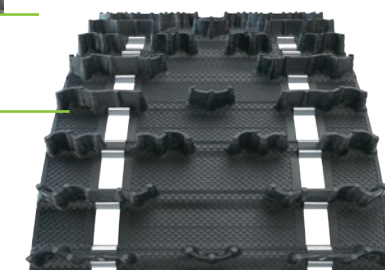


ADJUSTABLE MOUNTAIN HANDLEBARS

5.5" riser with adjustable mountain handlebar.

BACKCOUNTRY X TRACK

137" track with 1.75" cupped lugs wrapped around the SLIDE-ACTION Rear Suspension.



TELESCOPING MOUNTAIN HANDLEBARS

Vertical 5.5" riser with adjustable mountain handlebar.

ARCTIC MOUNTAIN SUSPENSION

The lightweight Arctic Mountain Suspension™ features mountain-specific spindles and a 39.5-41.5" stance to enable great side hilling capabilities and improved handling.



FLOAT-ACTION REAR SUSPENSION

FLOAT-ACTION Rear Suspension matches its optimal travel and overall ride quality for class-leading performance in all backcountry conditions.



POWER CLAW TRACK

Available in either 141" or 153" length Power Claw tracks, each with 2.25" lugs.

CROSS COUNTRY



137"



XF CROSS COUNTRY LIMITED
XF CROSS COUNTRY LIMITED 9000 TURBO

- SLIDE-ACTION Rear Suspension with FOX ZERO QS3 shock and FOX ZERO QS3 on front suspension
- Mountain seat and handlebars help you adapt to more difficult terrains
- 137" x 1.75" Backcountry X track performs exceptionally off the trail and seamlessly adapts when you hop back on
- LED headlight

9000 TURBO

137"



137" (6000, 8000, 9000)

HIGH COUNTRY



XF HIGH COUNTRY

- FLOAT-ACTION Rear Suspension
- Mountain front suspension with 39.5–41.5" adjustable ski stance
- Telescoping handlebars
- 15" x 141" x 2.25" Power Claw track grabs firmly in the deep stuff
- Electric start (6000)

141" (6000, 8000)



XF HIGH COUNTRY LIMITED XF HIGH COUNTRY LIMITED 9000 TURBO

- Arctic Mountain Suspension with FOX ZERO QS3 shocks
- FLOAT-ACTION Rear Suspension with FOX ZERO QS3 shocks
- 2.25" Power Claw to perfectly pair power with ideal traction

141" (8000) 153" (8000, 9000)



9000 TURBO

DAY IN. DAY OUT. DANG RIGHT.



It's OK to let these machines take over. The Bearcat® lineup provides brawny utility. The Norseman™ is one part Viking explorer, one part long-haul trucker. Whatever the job, we have the all-day muscle to help get it done.

S P O R T & U T I L I T Y

The Norseman is your go anywhere and do anything machine with a revolutionary hybrid of utility, trail and crossover technology. While the Bearcat is your classic workhorse with the muscle and capabilities to get any job done.

N O R S E M A N X



ProUte SKI

Tapered 10-8" skis and 35.5-41.5" adjustable ski stance.

15" x 22"
4.5 CU IN

SPACIOUS REAR CARGO

Need to bring extra stuff along for the ride? Norseman models feature a large rear rack for hauling gear, gas or payloads.

MOUNTAIN HANDLEBARS

Improved handlebars feature new ergonomically friendly controls and offer versatility for riding in deep snow.

B E A R C A T 7 0 0 0 X T



ARCTIC RACE SUSPENSION

Combines tall ski spindles and widely spaced A-arms for the greatest torsional rigidity and strength. The lower A-arms mount to the chassis at an angle from the chassis centerline, with optimal caster/camber angles to improve comfort and cornering traction while reducing bump steer.

BEAR CLAW TRACK

Outstanding traction, flotation and stability in a full range of riding conditions.

WIDE RANGE 3 SPEED (WR3) TRANSMISSION

Wide Range 3 speed with easy shift and a 135 HP to handle heavy payloads, made easy by the large rear rack and heavy-duty rear bumper with a pivot hitch.

NORSEMAN



NORSEMAN

- 65-class HP 4-stroke 3000 engine
- 125-class HP 2-stroke C-TEC2 6000 engine
- XTRA-ACTION Articulating Rear Suspension with Arctic IFP shocks
- 15" x 154" x 1.6" Cobra track
- Electric start
- Tunnel bag

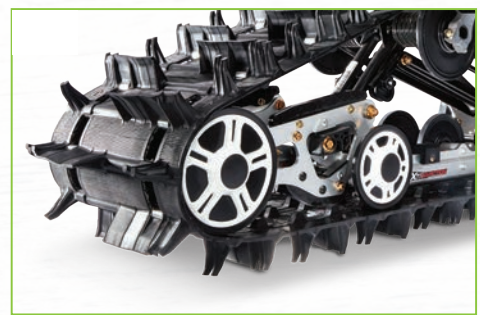
154" (3000, 6000)



NORSEMAN X

- 125-class HP 2-stroke C-TEC2 6000 engine
- 165-class HP 2-stroke C-TEC2 8000 engine
- XTRA-ACTION Articulating Rear Suspension with Arctic IFP shocks
- 15" x 153" x 2.25" Power Claw track
- Electric start
- Tunnel bag

153" (6000, 8000)



Power Claw track



165-class HP C-TEC2 8000 engine



Tunnel bag



BEARCAT XT

- 540cc twin cylinder 2-stroke fan-cooled engine
- Hi/Low transmission
- 20" x 156" x 1.5" Cobra track
- 37.8" ski stance
- Underseat storage and large rear storage



BEARCAT 7000 XT

- Powered by the 7000 4-stroke 135-class HP engine
- WR3 transmission makes it easy to shift to lower gears
- Articulating rear suspension
- ProUte 10/8 skis
- Large 19" high-height windshield
- 20" x 154" x 1.6" Bear Claw track

BEARCAT



EXPERIENCE THE COMFORTS OF THE MIDDLE OF NOWHERE.

The Arctic Cat lifestyle isn't all grit and competition. There's something to be said about simply wandering. Our 2-up touring carriage, the Pantera®, is both comfortable and dependable. Our classic, the Lynx®, is available for affordable sightseeing.



LUXURY FEATURES



COMFORTABLE RIDE

The Panteras come with 2-up or 3-up seats with adjustable backrests and passenger heated grips and seating.



IMPROVED CONTROLS

New handlebar-mounted controls with improved ergonomics are easier to use while riding and transmit visible information on the digital instrument gauge. New short-throw brake lever increases ride comfort.

XTRA-ACTION ARTICULATING REAR SUSPENSION

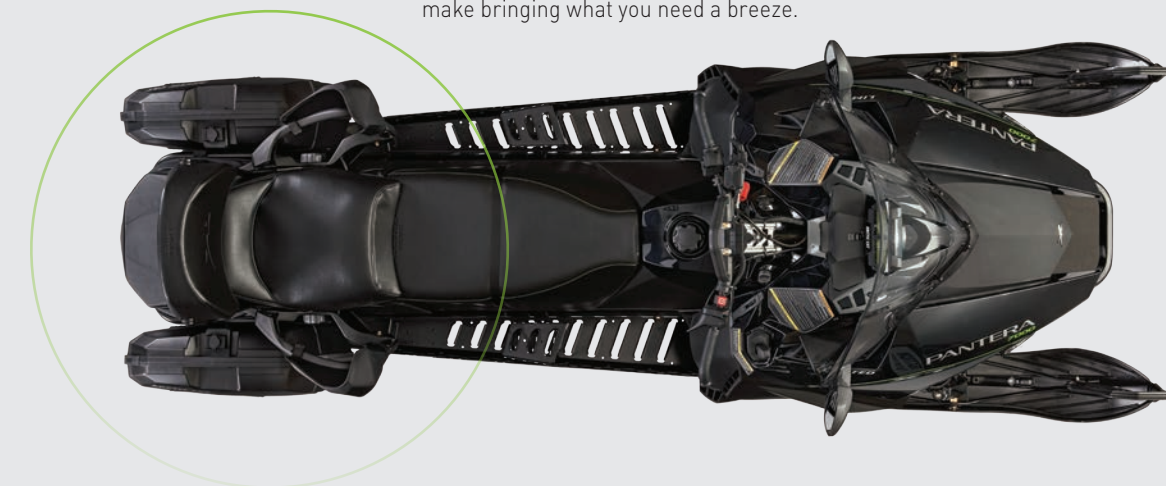
Thanks to an increased track length, you can float through the snow with ease, even while towing the heavy stuff. The 20" x 154" x 1.375" Bear Claw track provides plenty of traction to keep you going strong.

The articulating rear suspension allows you to go backward with as much ease as forward.

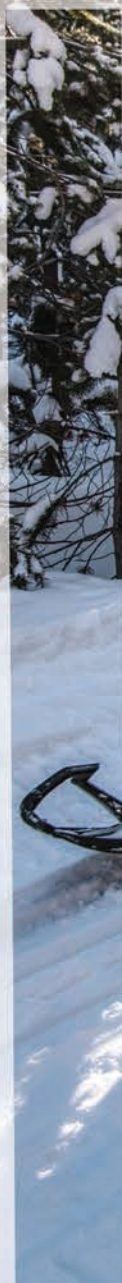
(7000 XT LTD only)

HARD SIDE STORAGE CASES

The rear luggage bag and hard side storage cases make bringing what you need a breeze.



PANTERA / LYNX



146"



146"



154"

PANTERA 146" (3000, 6000)

- Luxury touring sled with plenty of creature comforts
- Low-emission, fuel-efficient 3000 C-TEC4™ engine
- SLIDE-ACTION Rear Suspension
- Large rear storage compartment
- Driver and passenger heated visor plug-ins
- 14" mid-height windshield
- LED headlight (6000)

PANTERA LIMITED 146" (7000)

- Auxiliary fuel tank for 15 total gallons of fuel capacity
- Heated seats provide even more comfort
- Passenger wind deflectors and hand warmers
- Rear accessory outlet and lockable saddle bags
- 18" high-height windshield

PANTERA XT LIMITED 154" (7000)

- 3-up touring machine with the ProTour™ WT chassis
- 135-class HP 4-stroke 7000 engine
- WR3 transmission makes it easy to shift to lower gears
- ProUte 10/8 skis and new 154" x 20" Bear Claw track
- Rear accessory outlet and lockable saddle bags
- 19" high-height windshield



129"



144"

LYNX 2000 129" (2000)

- 565cc fan-cooled 2-stroke engine
- Tried-and-true classic that's easy to maintain
- SLIDE-ACTION Rear Suspension
- AWS™ VIII front suspension
- 10" mid-height windshield
- Electric start

LYNX 2000 LT 144" (2000)

- Classic 2-stroke touring sled featuring a 2-up adjustable seat and footrest
- AWS IV front suspension and ACT™ Diamond Direct Drive™
- Rear rack and fiberglass overload rear springs
- Electric start
- Rear rack

THE WORLD'S BEST RIDERS DESERVE THE WORLD'S BEST GEAR.

Customize your riding experience with gear and accessories made by the best riders for the best riders. Pick up the 2019 Arcticwear & Snowmobile Accessories catalog to find the perfect fit for your ride.



Accessories Shown: Jacket **Alpine Jacket** / Panels **Vented Side Panels** / Rack **Billet Rack** / Bumpers **Pro Mtn Front Bumper, Black Cats Rear Bumper**



- Ogio Cornice Backpack
- A-2 EXT Shovel



Mountain Pack



Boss Cat Boots



Accessories Shown: Jacket Elevation 3-1 Jacket / Rack SpeedRack® / Guards Flex-Tec Guards / Bag SpeedRack Gear Bag



Accessories Shown: Jacket Team Arctic Jacket / Rack Tunnel Rack / Guards Flex-Tec Guards / Windscreen Low SP Windscreen / Bumpers Pro Mtn Front Bumper, ProCross™ Rear Bumper



Pro Bumper



- Fleeced Team Arctic Hat
- Team Arctic Sponsor Jacket



Flex-Tec Guards



MX Aircat Helmet



Mid Touring Windscreen



- Hinged Balaclava
- Factory Jacket

2019 LINEUP



	M 6000 SE ES 141 / 153	M 8000 SNO PRO 153 / 162	M 8000 Hardcore 153 / 162	M 8000 MOUNTAIN CAT ALPHA ONE 154 / 165 (LIMITED AVAILABILITY)	M 8000 MOUNTAIN CAT 153 (ES) / 162 (ES)	M 9000 KING CAT 162	ZR 3000 129	ZR 6000 / 8000 ES 129 / 137	ZR 6000 / 8000 / 9000 SNO PRO ES 129 / 137	ZR 7000 / LIMITED 137 (iACT)	ZR 6000 / 8000 LIMITED ES 129 / 137 (iACT)	ZR 9000 LIMITED / THUNDERCAT 137 (iACT)	ZR 6000 / 8000 RR 129 / 137	ZR 9000 RR 137	
Engine, Type, Displacement, Cooling, Cylinders	6000, 2-stroke, 599cc, liquid, 2 cylinder	8000, 2-stroke, 749cc, liquid, 2 cylinder	8000, 2-stroke, 749cc, liquid, 2 cylinder	8000, 2-stroke, 749cc, liquid, 2 cylinder	8000, 2-stroke, 749cc, liquid, 2 cylinder	9000, 4-stroke, 998cc, liquid, 3 cylinder turbocharged	3000, 4-stroke, 700cc, liquid, 2 cylinder	6000, 2-stroke, 599cc, liquid, 2 cylinder 8000, 2-stroke, 749cc, liquid, 2 cylinder	6000, 2-stroke, 599cc, liquid, 2 cylinder 8000, 2-stroke, 749cc, liquid, 2 cylinder 9000, 4-stroke, 998cc, liquid, 3 cylinder turbocharged	7000, 4-stroke, 1049cc, liquid, 3 cylinder	6000, 2-stroke, 599cc, liquid, 2 cylinder 8000, 2-stroke, 749cc, liquid, 2 cylinder	9000, 4-stroke, 998cc, liquid, 3 cylinder turbocharged	6000, 2-stroke, 599cc, liquid, 2 cylinder 8000, 2-stroke, 749cc, liquid, 2 cylinder	9000, 4-stroke, 998cc, liquid, 3 cylinder turbocharged	
Fuel Capacity (gal.) / Oil System Capacity (quart)	11.7 / 3.25	11.7 / 3.25	11.7 / 3.25	11.7 / 3.25	11.6 (11.7) / 3.25	9.9 / 3.8	9.9 / 3.7	11.7 / 3.6 (6000, 8000), 9.9 / 3.8 (9000)	11.7 / 3.6 (6000, 8000), 9.9 / 3.8 (9000)	9.9 / 4.4	11.7 / 3.6	9.9 / 3.8	11.7 / 3.6	9.9 / 3.8	
Drive Clutch	TEAM Rapid Response II	TEAM Rapid Response II	TEAM Rapid Response II	TEAM Rapid Response II	TEAM Rapid Response II	TEAM Rapid Response II	Arctic 6 post (rpm sensing)	TEAM Rapid Response II	TEAM Rapid Response II	TEAM Rapid Response II	TEAM Rapid Response II	TEAM Rapid Response II	TEAM Rapid Response II	TEAM Rapid Response II	
Driven Clutch	TEAM Rapid Reaction BOSS	TEAM Rapid Reaction BOSS	TEAM Rapid Reaction BOSS	TEAM Rapid Reaction BOSS	TEAM Rapid Reaction BOSS	TEAM Rapid Reaction BOSS	10.75 in. dia. Arctic (roller cam)	TEAM Rapid Reaction BOSS	TEAM Rapid Reaction BOSS	TEAM Rapid Reaction BOSS	TEAM Rapid Reaction BOSS	TEAM Rapid Reaction BOSS	TEAM Rapid Reaction BOSS	TEAM Rapid Reaction BOSS	
Front Suspension / Rear Suspension	Arctic Mountain Suspension (AMS) / FLOAT-ACTION Rear Suspension	Arctic Mountain Suspension (AMS) / FLOAT-ACTION Rear Suspension	Arctic Mountain Suspension (AMS) / FLOAT-ACTION Rear Suspension	Arctic Mountain Suspension (AMS) / FLOAT-ACTION Rear Suspension	Arctic Mountain Suspension (AMS) / FLOAT-ACTION Rear Suspension	Arctic Mountain Suspension (AMS) / FLOAT-ACTION Rear Suspension	Arctic Race Suspension / SLIDE-ACTION with 3 wheel rear axle assembly, coupling blocks, Torque-Sensing Link rear arm and adjustable torsion springs	Arctic Race Suspension with sway bar / SLIDE-ACTION with 3 wheel rear axle assembly, coupling blocks, Torque-Sensing Link rear arm and adjustable torsion springs	Arctic Race Suspension with sway bar / SLIDE-ACTION with 3 wheel rear axle assembly, coupling blocks, Torque-Sensing Link rear arm and adjustable torsion springs	Arctic Race Suspension with sway bar / SLIDE-ACTION with 3 wheel rear axle assembly, coupling blocks, Torque-Sensing Link rear arm and adjustable torsion springs (and Interactive Arctic Cat Technology Suspension)	Arctic Race Suspension with sway bar and Interactive Arctic Cat Technology Suspension / SLIDE-ACTION with 3 wheel rear axle assembly, coupling blocks, Torque-Sensing Link rear arm and adjustable torsion springs (and Interactive Arctic Cat Technology Suspension)	Arctic Race Suspension with sway bar and Interactive Arctic Cat Technology Suspension / SLIDE-ACTION with 3 wheel rear axle assembly, coupling blocks, Torque-Sensing Link rear arm and adjustable torsion springs (and Interactive Arctic Cat Technology Suspension)	Arctic Race Suspension with sway bar / SLIDE-ACTION with 3 wheel rear axle assembly, coupling blocks, Torque-Sensing Link rear arm and adjustable torsion springs	Arctic Race Suspension with sway bar / SLIDE-ACTION with 3 wheel rear axle assembly, coupling blocks, Torque-Sensing Link rear arm and adjustable torsion springs	
Ski Shocks	Arctic Cat IFF 1.5	FOX FLOAT 3	FOX 1.5 ZERO QS3	FOX FLOAT 3 QS3	FOX FLOAT 3 QS3	FOX FLOAT 3 EVOL	Hydraulic twin tube shocks	Hydraulic twin tube shocks (6000) Arctic Cat IFF 1.5 (8000)	FOX 1.5 ZERO RC	Hydraulic twin tube / FOX 1.5 ZERO QS3 (Limited) (FOX 1.5 ZERO iQS)	FOX 1.5 ZERO QS3 (FOX 1.5 ZERO iQS)	FOX 1.5 ZERO QS3 (FOX 1.5 ZERO iQS)	FOX 1.5 ZERO QS3R Kashima	FOX 1.5 ZERO QS3R Kashima	
Front Travel (in.)	7	7	7	7	7	7	10	10	10	10	10	10	10	10	
Front Track Shock	Arctic Cat IFF 1.5	Arctic Cat IFF 1.5	FOX 1.5 ZERO QS3	FOX FLOAT QS3	FOX FLOAT QS3	FOX FLOAT 3 EVOL	Hydraulic twin tube	Hydraulic twin tube (6000) Arctic Cat IFF 1.5 (8000)	Arctic Cat IFF 1.5	Hydraulic twin tube shocks Arctic Cat IFF 1.5 (Limited & iACT)	Arctic Cat IFF 1.5	Arctic Cat IFF 1.5	FOX 1.5 ZERO QS3 Kashima	FOX 1.5 ZERO QS3 Kashima	
Rear Track Shock	Arctic Cat IFF 1.5	FOX FLOAT 3	FOX 1.5 ZERO QSL	FOX FLOAT 3 QSL	FOX FLOAT 3 QSL	FOX FLOAT 3 QSL	Hydraulic 2" twin tube	Hydraulic 2" twin tube (6000) Arctic Cat IFF 1.5 (8000)	Arctic Cat IFF 2.0	Hydraulic 2" twin tube / FOX 2.0 ZERO QS3 Fox 2.0 ZERO iQS (ACT Limited)	FOX 2.0 ZERO QS3 (FOX 2.0 ZERO iQS)	FOX 1.5 ZERO QS3 (FOX 2.0 ZERO iQS)	FOX 2.0 ZERO QS3R Kashima	FOX 2.0 ZERO QS3R Kashima	
Rear Travel (in.)	14.5 / 15.5	15.5 / 16.5	15.5 / 16.5	15.5 / 16.5	15.5 / 16.5	16.5	13.5	13.5	13.5	13.5	13.5	13.5	13.5	13.5	
Dimensions (LxWxH)	131x42.5-44.5x50	132.3x42.5-44.5x50 137.3x42.5-44.5x50	132.3x42.5-44.5x50 137.3x42.5-44.5x50	132.3x42.5-44.5x50 137.3x42.5-44.5x50	132.3x42.5-44.5x50 137.3x42.5-44.5x50	137.3x42.5-44.5x50	121x47.75x49.25	125.75x47.75x50.12 125.75x47.75x50.12	121x47.75x54.75 125.75x47.75x47.12	125.75x47.75x50.12 (Limited & iACT)	121x47.75x45.75	125.75x47.75x51.12	125.75x47.75x47.12/50.12 121x47.75x45.75	125.75x47.75x47.12	
Track Type	Power Claw	Power Claw	Power Claw	Power Claw	Power Claw	Power Claw	Ripsaw II	Ripsaw (129) / Ripsaw II (137)	Ripsaw (129) / Ripsaw II (137)	Ripsaw II	Ripsaw (129) / Ripsaw II (137)	Ripsaw (Thundercat) / Ripsaw II (Limited)	Ripsaw (6000) / Ripsaw II (8000)	Ripsaw II	
Track Width, Length, Lug, Pitch Ski Stance	15, 141/153, 2.60, 3.00 35.5-37.5 adjustable	15, 153, 2.60, 3.00 15, 153/162, 3.00, 3.00 35.5-37.5 adjustable	15, 153/162, 3.00, 3.00 35.5-37.5 adjustable	15, 154/165, 3.00, 3.50 35.5-37.5 adjustable	15, 153/162, 3.00, 3.00 35.5-37.5 adjustable	15, 162, 3.00, 3.00 35.5-37.5 adjustable	15, 129, 1.00, 2.86 42-43 adjustable	15, 129/137, 1.25, 2.86 42-43 adjustable	15, 129/137, 1.25, 2.86 42-43 adjustable	15, 137, 1.25, 2.86 42-43 adjustable	15, 129/137, 1.25, 2.86 42-43 adjustable	15, 137, 1.25/1.0, 2.86 42-43 adjustable	15, 129/137, 1.25, 2.86 42-43 adjustable	15, 137, 1.25, 2.86 42-43 adjustable	
Standard Features	12V Outlet, Push Button Electric Start, Hand & Thumb Warmers, 2-Bulb Headlights, Ice Scratchers, Tether Switch	12V Outlet, Push Button Electric Start (ES Only), Hand & Thumb Warmers, 2-Bulb Headlights, Ice Scratchers, Tether Switch	12V Outlet, Goggle Holder, Hand & Thumb Warmers, LED Headlight with Accent Light, Ice Scratcher, Tether Switch	12V Outlet, Goggle Holder, Hand & Thumb Warmers, LED Headlights with Accent Light, Ice Scratchers, Tether Switch	12V Outlet, Push Button Electric Start (ES Only), Goggle Holder, Hand & Thumb Warmers, LED Headlight with Accent Light, Ice Scratchers, Tether Switch	12V Outlet, Electric Start, Goggle Holder, Hand & Thumb Warmers, LED Headlight with Accent Light, Ice Scratchers, Tether Switch	12V Outlet, Electric Start, Hand & Thumb Warmers, 2-Bulb Headlight, Tether Switch	12V Outlet, Push Button Electric Start, Hand & Thumb Warmers, 2-Bulb Headlight, Tether Switch	12V Outlet, Push Button Electric Start, Hand & Thumb Warmers, 2-Bulb Headlight, Tether Switch	12V Outlet, Push Button Electric Start, Hand & Thumb Warmers, 2-Bulb Headlight, Tether Switch	12V Outlet, Electric Start, Hand & Thumb Warmers, 2-Bulb Headlight, Tether Switch	12V Outlet, Push Button Electric Start, Hand & Thumb Warmers, 2-Bulb Headlight, Tether Switch	12V Outlet, Push Button Electric Start, Hand & Thumb Warmers, Goggle Holder, LED Headlight with Accent Light, Heated Driver Seat, Tether Switch	12V Outlet, Electric Start, Goggle Holder, Hand & Thumb Warmers, LED Headlight with Accent Light, Heated Driver Seat, Tether Switch	12V Outlet, Push Button Electric Start, Hand & Thumb Warmers, LED Headlight with Accent Light, Tether Switch
Windshield	3" mountain-height	3" mountain-height	3" mountain-height	3" mountain-height	3" mountain-height	3" mountain-height	11" mid-height	11" mid-height	11" mid-height	5.5" race-height	11" mid-height	11" mid-height	5.5" race-height	5.5" race-height	



	ZR 120 / ZR 200 (ES)	XF 6000 / 8000 CROSS COUNTRY LIMITED ES 137	XF 9000 CROSS COUNTRY LIMITED 137	XF 6000 / 8000 HIGH COUNTRY ES 141	XF 8000 / 9000 HIGH COUNTRY LIMITED ES 141 / 153	NORSEMAN 3000 / 6000	NORSEMAN X 6000 / 8000	BEARCAT XT	BEARCAT 7000 XT	PANTERA 3000 / 6000 ES	PANTERA 7000 LIMITED	PANTERA 7000 XT LIMITED	LYNX 2000 ES / LYNX 2000 LT ES	
Engine, Type, Displacement, Cooling, Cylinders	120, 4-stroke, 123cc, air, 1 cylinder 200, 4-stroke, 192cc, air, 1 cylinder	6000, 2-stroke, 599cc, liquid, 2 cylinder 8000, 2-stroke, 749cc, liquid, 2 cylinder	9000, 4-stroke, 998cc, liquid, 3 cylinder turbocharged	6000, 2-stroke, 599cc, liquid, 2 cylinder 8000, 2-stroke, 749cc, liquid, 2 cylinder	8000, 2-stroke, 749cc, liquid, 2 cylinder 9000, 4-stroke, 998cc, liquid, 3 cylinder turbocharged	3000, 4-stroke, 700cc, liquid, 2 cylinder 6000, 2-stroke, 599cc, liquid, 2 cylinder	6000, 2-stroke, 599cc, liquid, 2 cylinder 8000, 2-stroke, 749cc, liquid, 2 cylinder	540, 2-stroke, 540cc, fan, 2 cylinder	7000, 4-stroke, 1049cc, liquid, 3 cylinder	3000, 4-stroke, 700cc, liquid, 2 cylinder 6000, 2-stroke, 599cc, liquid, 2 cylinder	7000, 4-stroke, 1049cc, liquid, 3 cylinder	7000, 4-stroke, 1049cc, liquid, 3 cylinder	2000, 2-stroke, 565cc, fan, 2 cylinder	
Fuel Capacity (gal.) / Oil System Capacity (quart)	0.5 / 0.6 (120), 2.2 / 0.6 (200)	11.7 / 3.6	9.9 / 3.8	11.7 / 3.6	11.7 / 3.6 (8000), 9.9 / 3.8 (9000)	10.7 / 3.7 (3000), 13.7 / 3.6 (6000)	13.7 / 3.6	11.6 / 3.6	14.7 / 3.9	10.7 / 3.7 (3000), 13.7 / 3.6 (6000)	15 / 4.4	14.7 / 3.9	11.2 / 4.2	
Drive Clutch	Arctic Centrifugal (120) / Arctic 5.25 in. dia. (rpm sensing) (200)	TEAM Rapid Response II	TEAM Rapid Response II	TEAM Rapid Response II	TEAM Rapid Response II	Arctic 6 Post (rpm sensing) (3000) / TEAM Rapid Response II (6000)	TEAM Rapid Response II	YXRC	TEAM Rapid Response	Arctic 6 Post (rpm sensing) (3000) / TEAM Rapid Response II (6000)	TEAM Rapid Response II	TEAM Rapid Response	Arctic 6 post (rpm sensing)	
Driven Clutch	NA (120) / 6.75 in. dia. Arctic (roller cam) (200)	TEAM Rapid Reaction BOSS	TEAM Rapid Reaction BOSS	TEAM Rapid Reaction BOSS	TEAM Rapid Reaction BOSS	10.4 in. dia. Arctic (roller cam) (3000) / TEAM Rapid Reaction BOSS (6000)	TEAM Rapid Reaction BOSS	Variable ratio	TEAM Rapid Reaction BOSS	10.4 in. dia. Arctic (roller cam) (3000) / TEAM Rapid Reaction BOSS (6000)	TEAM Rapid Reaction BOSS	TEAM Rapid Reaction BOSS	10.4 in. dia. Arctic (roller cam)	
Front Suspension / Rear Suspension	AMS / Side-rail, adjustable torsion spring AMS / Side-rail, adjustable torsion spring, coil-over rear shock	Arctic Race Suspension with sway bar / SLIDE-ACTION with 3 wheel rear axle assembly, coupling blocks, Torque-Sensing Link rear arm and adjustable torsion springs	Arctic Race Suspension with sway bar / SLIDE-ACTION with 3 wheel rear axle assembly, coupling blocks, Torque-Sensing Link rear arm and adjustable torsion springs	Arctic Mountain Suspension (AMS) with sway bar / FLOAT-ACTION Rear Suspension	Arctic Mountain Suspension (AMS) with sway bar / FLOAT-ACTION Rear Suspension	Arctic Race Suspension / XTRA-ACTION Rear Suspension with adjustable torsion springs and Torque-Sensing Link rear arm	Arctic Race Suspension / XTRA-ACTION Rear Suspension with adjustable torsion springs and Torque-Sensing Link rear arm	TSS / Pro Comfort Suspension with flip-up rails	Arctic Race Suspension with sway bar / XTRA-ACTION Rear Suspension with adjustable torsion springs, fiberglass overload springs and Torque-Sensing Link rear arm	Arctic Race Suspension with sway bar / SLIDE-ACTION Rear Suspension, coupling blocks, Torque-Sensing Link rear arm, adjustable torsion springs and fiberglass overload springs	Arctic Race Suspension with sway bar / SLIDE-ACTION Rear Suspension, coupling blocks, Torque-Sensing Link rear arm, adjustable torsion springs and fiberglass overload springs	Arctic Race Suspension with sway bar / XTRA-ACTION Rear Suspension with adjustable torsion springs, fiberglass overload springs and Torque-Sensing Link rear arm	Arctic Race Suspension with sway bar / XTRA-ACTION Rear Suspension with adjustable torsion springs, fiberglass overload springs and Torque-Sensing Link rear arm	AMS VII with sway bar / SLIDE-ACTION Rear Suspension, coupling blocks, Torque-Sensing Link rear arm, adjustable torsion springs and fiberglass overload springs
Ski Shocks	Hydraulic twin tube shocks	FOX 1.5 ZERO QS3	FOX 1.5 ZERO QS3	Arctic Cat IFF 1.5	FOX 1.5 ZERO QS3	Hydraulic twin tube shocks	Arctic Cat IFF 1.5	Hydraulic, gas cell	Hydraulic twin tube shocks	Hydraulic twin tube shocks	Arctic Cat IFF 1.5	Arctic Cat IFF 1.5	Hydraulic twin tube shocks	
Front Travel (in.)	4.5	10	10	9	9	9.5	9.5	6	9	9.5	9.5	9	9.5	
Front Track Shock	NA	Arctic Cat IFF 1.5	Arctic Cat IFF 1.5	Arctic Cat IFF 1.5	FOX 1.5 ZERO QS3	Hydraulic twin tube	Arctic Cat IFF 1.5	Hydraulic, gas cell	Hydraulic twin tube	Hydraulic twin tube	Arctic Cat IFF 1.5	Arctic Cat IFF 1.5	Hydraulic twin tube	
Rear Track Shock	NA (120) Hydraulic twin tube (200)	FOX 2.0 ZERO QS3	FOX 2.0 ZERO QS3	Arctic Cat IFF 1.5	FOX 1.5 ZERO QS3	Arctic Cat IFF 1.5	Arctic Cat IFF 1.5	Hydraulic, gas cell	Arctic Cat IFF 1.5	Arctic Cat IFF 1.5	Arctic Cat IFF 1.5	Arctic Cat IFF 1.5	Hydraulic twin tube Hydraulic 2" twin tube (LT)	
Rear Travel (in.)	4.5 / 8.5	13.5	13.5	14.5	14.5	13.5	13.5	11.3	13	13.5	13.5	13	13.5 / 13.3	
Dimensions (LxWxH)	73x36x34 (120) 84x36x36 (200)	125.75x47.75x47.78	125.75x47.75x47.78	131x46.5-48.5x50	131x46.5-48.5x50 132.3x46.5-48.5x50	132x48x52	132x48x52	121x46x58	133x50x58	129x48x52	129x48x55	133x50x58	118x48x49 131x48x53 (LT)	
Track Type	Cobra	Backcountry X	Backcountry X	Power Claw	Power Claw	Cobra	Power Claw	Cobra	Bear Claw	Standard (3000) / Ripsaw (6000)	Ripsaw	Bear Claw	Challenger	
Track Width, Length, Lug, Pitch Ski Stance	10, 67, 0.75, 2.59 (120) 10, 93, 1.00, 2.59 (200) 30.5	15, 137, 1.75, 2.86 42-43 adjustable	15, 137, 1.75, 2.86 42-43 adjustable	15, 141, 2.25, 3.00 39.5-41.5 adjustable	15, 141/153, 2.25, 3.00 39.5-41.5 adjustable	15, 154, 1.60, 2.86 35.5-41.5 adjustable	15, 153, 2.25, 3.00 35.5-41.5 adjustable	20, 156, 1.50, 2.25 37.8	20, 154, 1.60, 2.86 37.5-43.5 adjustable	15, 146, 1.00/1.25, 2.86 42-43 adjustable	15, 146, 1.25, 2.86 42-43 adjustable	20, 154, 1.375, 2.86 42-43 adjustable	15, 129/144, 1.00, 2.52 43	
Standard Features	Hand Warmers, Safety Flag (120), Tether Switch, Electric Start (200 ES only)	12V Outlet, Push Button Electric Start, Hand & Thumb Warmers, LED Headlight with Accent Light, Tether Switch	12V Outlet, Electric Start, Goggle Holder, Hand & Thumb Warmers, LED Headlight with Accent Light, Heated Driver Seat, Tether Switch	12V Outlet, Push Button Electric Start, Hand & Thumb Warmers, 2-Bulb Headlight, Tether Switch	12V Outlet, Push Button Electric Start, Hand & Thumb Warmers, LED Headlight with Accent Light, Tether Switch	12V Outlet, Electric Start (Push Button on 6000), Hand & Thumb Warmers, 2-Bulb Headlight, Rear Rack, Tow Hitch, Tunnel Bag, Tether Switch	12V Outlet, Push Button Electric Start, Hand & Thumb Warmers, 2-Bulb Headlight, Rear Rack, Tow Hitch, Tunnel Bag, Tether Switch	Electric Start, Front Bumper, Hand & Thumb Warmers, 2-Bulb Headlight, Rear Rack, Tow Hitch	12V Outlet, Backup Light, Electric Start, Hand & Thumb Warmers, Tether Switch, Tow Hitch, Tunnel Rails	12V Outlet, Adjustable Backrest, Electric Start (Push Button on 6000), Hand & Thumb Warmers, 2-Bulb Headlight (LED Headlight on 6000), Passenger Accessories, Tether Switch	12V Outlet, Adjustable Backrest, Auxiliary Gas Tank (4.3 gal.), Electric Start, Hand & Thumb Warmers, LED Headlight with Accent Light, Heated Driver Seat, Heated Passenger Seat, Passenger Accessories, Rear Storage Compartment, Tether Switch, Tow Hitch	12V Outlet, Adjustable Backrest, Electric Start, Hand & Thumb Warmers, 2-Bulb Headlight, Heated Driver Seat, Heated Passenger Seat, Passenger Accessories, Rear Storage Compartment, Tether Switch, Tow Hitch	Adjustable Backrest, Electric Start, Hand & Thumb Warmers, 4-Bulb Headlight, Rear Rack, Tunnel Rails	
Windshield	4" low-height	11" mid-height	11" mid-height	3" mountain-height	3" mountain-height	14" mid-height	14" mid-height	18" high-height	19" high-height	14" mid-height	18" high-height	19" high-height	13" mid-height	



THRIVE IN THE WIDE WORLD OF ARCTIC CAT

ARCTICCAT.COM ARCTIC CAT'S ONLINE HQ. EVERYTHING FROM MACHINES AND SPECS DOWN TO THE ACCESSORIES AND GEAR YOU NEED TO TAKE ON THE WORLD.

Snowmobiling is serious fun. Be sure to read and understand your owner's manual and please pay special attention to the safety instructions. Arctic Cat Inc. endorses and encourages the safe use of all snowmobiles. Be careful; you can get hurt. Wear an approved helmet and don't drink and ride. Be aware of natural hazards you may encounter, allow yourself plenty of room to safely stop your snowmobile under all conditions, and maintain your equipment. Your safety is in your hands, so take care. All scenes depicted or described in this brochure were performed by professional riders under carefully controlled conditions. Leave the fancy riding to the pros; they practice for years and train very hard to make it look easy. Never attempt to duplicate these maneuvers or encourage others to do so. We care about your safety and enjoyment of the sport. All materials and specifications are subject to change without notice. All specifications, competitive specifications, claims and information contained within are based on current knowledge and readily available printed material available as of January 1, 2018. All rights reserved. Cobra™ and Ripsaw™ are trademarks of Camso Inc. Diamond Direct Drive™ is a trademark of Black Diamond, Inc. FOX® EVOL™ FOX FLOAT®, FOX® QS3, FOX® QSL and FOX® ZERO Pro are registered trademarks of FOX Racing Shox. TEAM® Rapid Response™ is a trademark of TEAM Industries. ACT™ Alpha One™ Arctic Cat®, Arctic Mountain Suspension™, Arctic Race Suspension™, ARS™ Ascender™, AWS™ Bearcat®, C-TEC2™, C-TEC4™, Cross Country™, High Country™, iACT™, Lynx®, Mountain Cat®, Norseman™, Pantera®, Power Claw™, ProClimb™, ProCross™, ProTour™, SLIDE-ACTION Rear Suspension™, Sno Pro®, Sno-Cross™, SpeedRack®, Team Arctic®, Thundercat® and ZR® are trademarks or registered trademarks of Arctic Cat Inc. The Arctic Cat snowmobile brand is among the most widely recognized and respected in the industry. The company designs, engineers, manufactures and markets snowmobiles, in addition to related parts, garments and accessories under the Arctic Cat® brand name. For more information, visit: www.arcticcat.com. Textron Inc. is a multi-industry company that leverages its global network of aircraft, defense, industrial and finance businesses to provide customers with innovative solutions and services. Textron is known around the world for its powerful brands such as Bell Helicopter, Cessna, Beechcraft, Hawker, Jacobsen, Kautex, Lycoming, E-Z-GO, Greenlee, Textron Off Road, Arctic Cat, Textron Systems, and TRU Simulation + Training. For more information, visit: www.textron.com.

